

Robert A. Levine, D.D.S., F.C.P.P.

- Diplomate, American Board of Periodontology
- Clinical Professor in the Department of Periodontology and Oral Implantology at Temple Kornberg School of Dentistry
- Clinical Associate Professor of Periodontics in the Post-Graduate Department of Periodontics, Periodontal Prosthesis and Implantology at the University of Pennsylvania School of Dental Medicine.
- Fellow, College of Physicians, Philadelphia, PA
- Fellow, International Team for Implantology, Basel, Switzerland

Phone: 215-677-8686 Cell: 215-990-0406 www.padentalimplants.com

Todd Hydock, Director of Laboratory Services

Phone: 215-699-8861 Cell: 215-262-1099

Photographs Courtesy of:

Surgeon: Robert A. Levine, D.D.S, F.C.P.P.

Prosthodontist: Harry Randel, D.M.D.

Restoring a Reduced Number of Implants Using a Milled Titanium Bar and a Wrap Around Screw Retained Denture

Pre-Surgical Visit

- Make maxillary & mandibular impressions for study models.
- Bite registration at proper VDO.
- Record shade and appropriate clinical photographs.



Pre-Surgical Laboratory Step

- Articulate models.
- Extract model teeth (if applicable).
- Immediate Denture Fabricated.
- Clear Acrylic Duplicate Denture Surgical Guide.
- Custom Open Tray Fabricated.
- Occlusal Putty Matrix Fabricated.

All items to be delivered to Dr. Levine prior to day of surgery.



Robert A. Levine, D.D.S., F.C.P.P.

- Diplomate, American Board of Periodontology
- Clinical Professor in the Department of Periodontology and Oral Implantology at Temple Kornberg School of Dentistry
- Clinical Associate Professor of Periodontics in the Post-Graduate Department of Periodontics, Periodontal Prosthesis and Implantology at the University of Pennsylvania School of Dental Medicine.
- Fellow, College of Physicians, Philadelphia, PA
- Fellow, International Team for Implantology, Basel, Switzerland

Phone: 215-677-8686 Cell: 215-990-0406 www.padentalimplants.com

Todd Hydock, Director of Laboratory Services

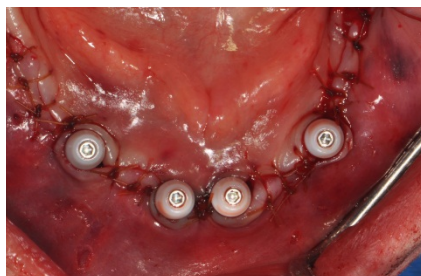
Phone: 215-699-8861 Cell: 215-262-1099

Restoring a Reduced Number of Implants Using a Milled Titanium Bar and a Wrap Around Screw Retained Denture

Surgical Visit

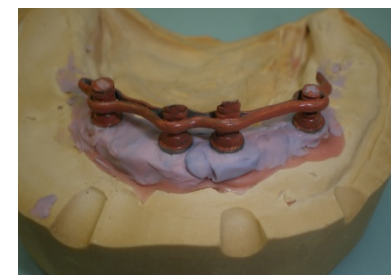
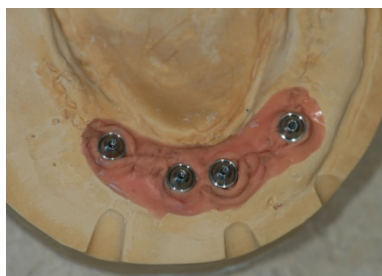
(If restorative dentist attends surgery, bring all Impression materials, bite resins, and dental assistant)

- Extractions, Alveoplasty, Implant and Multi-unit Abutment placement.
- Open Tray Abutment level Impression.
- VDO and Bite re-established with Stent and Occlusal Putty Matrix.
- Replace healing caps.



Immediate Provisional Laboratory Step & 24-48 Provisional Seating

- Abutment Analog model poured.
- Articulated using Clear Stent/Bite.
- Immediate Denture converted with temporary cylinders & wire reinforcement.
- Seat Screw Retained provisional within 24-48 hours.
- Re-check occlusion few days later.



Robert A. Levine, D.D.S., F.C.P.P.

- Diplomate, American Board of Periodontology
- Clinical Professor in the Department of Periodontology and Oral Implantology at Temple Kornberg School of Dentistry
- Clinical Associate Professor of Periodontics in the Post-Graduate Department of Periodontics, Periodontal Prosthesis and Implantology at the University of Pennsylvania School of Dental Medicine.
- Fellow, College of Physicians, Philadelphia, PA
- Fellow, International Team for Implantology, Basel, Switzerland

Phone: 215-677-8686 Cell: 215-990-0406 www.padentalimplants.com

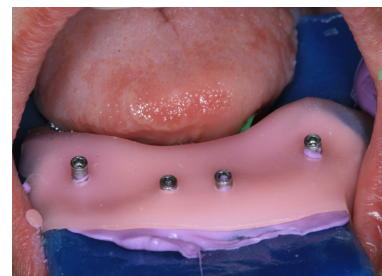
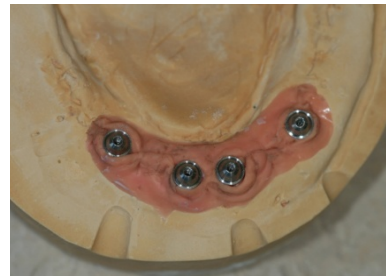
Todd Hydock, Director of Laboratory Services

Phone: 215-699-8861 Cell: 215-262-1099

Restoring a Reduced Number of Implants Using a Milled Titanium Bar and a Wrap Around Screw Retained Denture

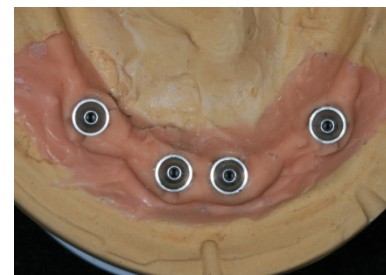
First Prosthetic Visit (approximately 3 months post-op)

- Screw retained Bite Rim and Verification Jig will be made on the Immediate model by lab.
- Provisional is removed and Verification Jig inserted and checked for passivity, if necessary cut and re-index. Jig is picked up in new impression for final cast.
- Screw retained bite rim is inserted and occlusal records are taken, midline/smile line marked.
- Reinsert and Make impression of Provisional.
- Record shade and appropriate photos.



Second Prosthetic Visit

- New Abutment Model poured and rearticulated with Bite Rim records by Laboratory.
- Teeth Set up for Try-in by Lab.
- Remove Provisional and Try-in Setup.



Robert A. Levine, D.D.S., F.C.P.P.

- Diplomate, American Board of Periodontology
- Clinical Professor in the Department of Periodontology and Oral Implantology at Temple Kornberg School of Dentistry
- Clinical Associate Professor of Periodontics in the Post-Graduate Department of Periodontics, Periodontal Prosthesis and Implantology at the University of Pennsylvania School of Dental Medicine.
- Fellow, College of Physicians, Philadelphia, PA
- Fellow, International Team for Implantology, Basel, Switzerland

Phone: 215-677-8686 Cell: 215-990-0406 www.padentalimplants.com

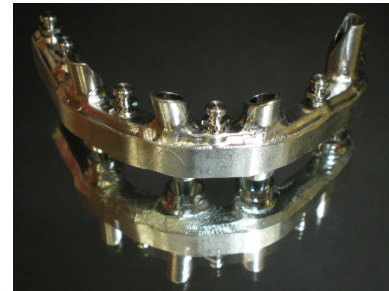
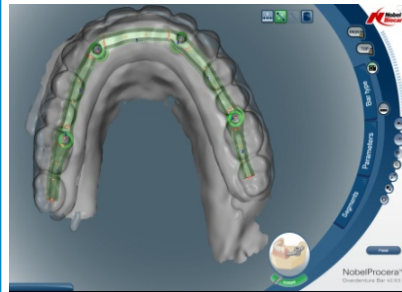
Todd Hydock, Director of Laboratory Services

Phone: 215-699-8861 Cell: 215-262-1099

Restoring a Reduced Number of Implants Using a Milled Titanium Bar and a Wrap Around Screw Retained Denture

Third Prosthetic Visit

- Laboratory will scan and design Milled Titanium bar and have it milled at milling center.
- Lab will transfer the approved Setup to the bar.
- Bar setup is tried in for final approval.



Fourth & Final Prosthetic Visit

- Laboratory will finish Hybrid Bar and Night guard.
- Hybrid Prosthesis is seated and torqued.
- Occlusion is checked and adjusted.
- Patient is advised on proper hygiene and the compliance of a night guard.
- Waterpik is provided to patient.
- Decide on appropriate Periodontal MAT frequency.

